



**H.F.R.I.**  
Hellenic Foundation for  
Research & Innovation

**Description of the funded research project**  
**Call: Fieldwork for data collection in Greece under the framework of the 10th wave of European Social Survey**



**Title of the research project:**

**Fieldwork for data collection in Greece under the framework of the 10th wave of European Social Survey**

**Principal Investigator:  
Dr. Theoni Stathopoulou**



**Host Institution:  
National Centre for Social Research (EKKE)  
[www.ekke.gr](http://www.ekke.gr)**



**Project webpage  
[europeansocialsurvey.org](http://europeansocialsurvey.org)**



ESS is a European Research Infrastructure Consortium (ESS ERIC)

**Budget: 219.877**

**Duration: 15 months**





# Greece in the ESS ERIC

**National Representative - ESS ERIC General Assembly:**

**Prof. Nicolas Demertzis**

**National Coordinators:**

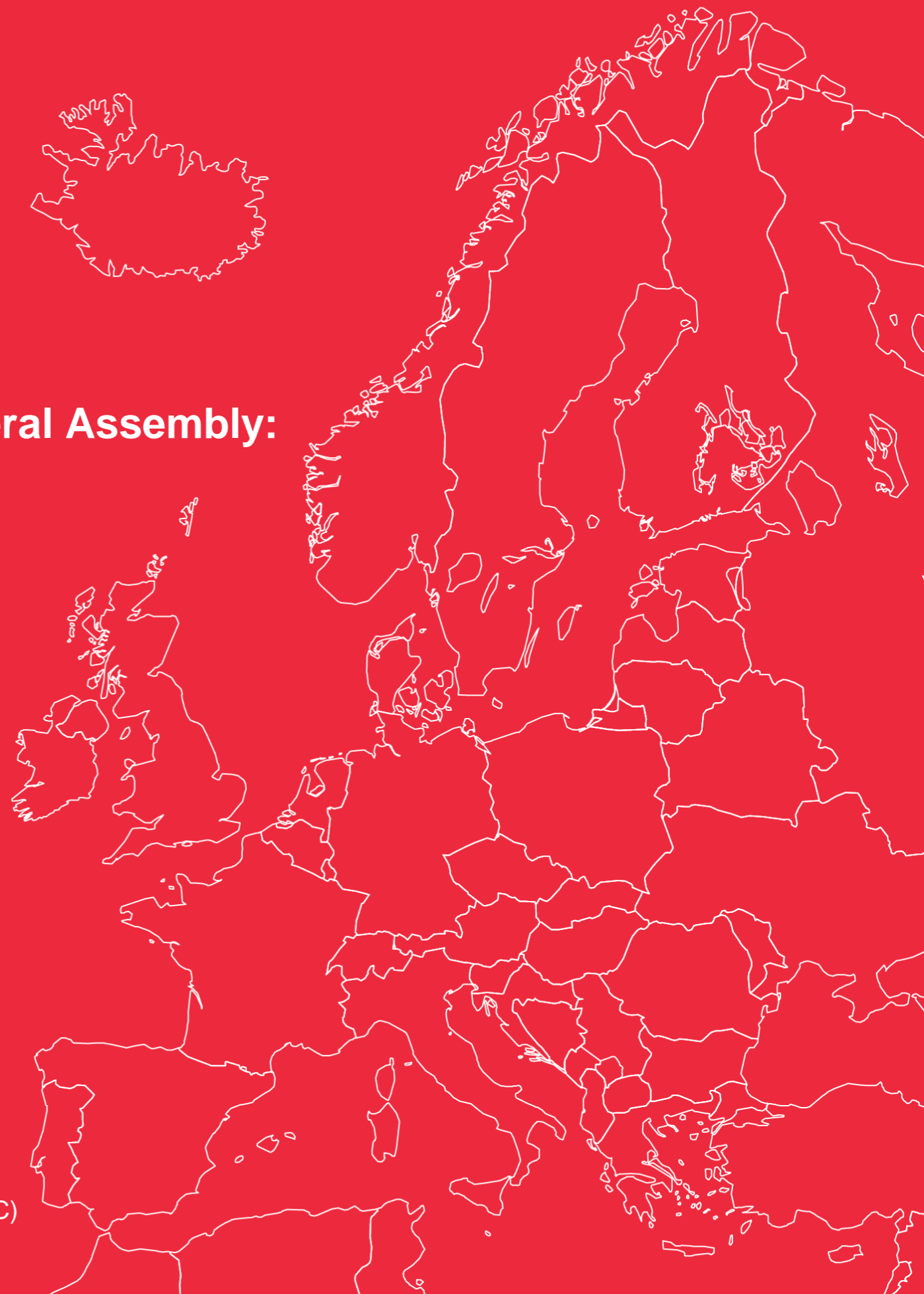
**Dr. Theoni Stathopoulou**

**Dr. Joanna Tsiganou**



**[europeansocialsurvey.org](http://europeansocialsurvey.org)**

ESS is a European Research Infrastructure Consortium (ESS ERIC)



# Greece in the ESS ERIC

## National team members

G.Bithymitris  
A.Fragiskou  
A.Hatzigianni  
K.Iliou  
M.Kakepaki  
D.Kondyli  
A.Linardis  
A.Mouriki  
N.Sarris  
C.Varouxli



[europeansocialsurvey.org](http://europeansocialsurvey.org)

ESS is a European Research Infrastructure Consortium (ESS ERIC)



## Research Project Synopsis

The European Social Survey (ESS) is an academically driven cross-national survey that has been conducted across Europe since its establishment in 2001. Every two years, face-to-face interviews are conducted with newly selected, cross-sectional samples.

The survey measures the attitudes, beliefs and behaviour patterns of diverse populations in more than twenty- nations.

The objectives of the ESS are:

- to chart stability and change in social structure, conditions and attitudes in Europe and to interpret how Europe's social, political and moral fabric is changing;
- to achieve and spread higher standards of rigour in cross-national research in the social sciences, including for example, questionnaire design and pre-testing, sampling, data collection, reduction of bias and the reliability of questions;
- to introduce soundly-based indicators of national progress, based on citizens' perceptions and judgements of key aspects of their societies;
- to undertake and facilitate the training of European social researchers in comparative quantitative measurement and analysis;
- to improve the visibility and outreach of data on social change among academics, policy makers and the wider public

The aim of the research project is to collect data for the implementation of the ESS 10<sup>th</sup> round in Greece.

The National Centre for Social Research (EKKE) has been the National Coordinator for ESS in Greece from 2002 onwards.

## ESS

- **First funded in 2001**  
Funded by the European Commission, following preparatory work by Roger Jowell and Max Kaase at the European Science Foundation
- **Won Descartes Prize (2005)**  
The first social science project to win the research prize
- **ESFRI Roadmap > Landmark**  
Named on Roadmap (2006, 2008, 2010) and as Landmark (2016, 2018)
- **Became European Research Infrastructure Consortium (2013)**  
Currently the highest number of members (24\*) of any ERIC
- **The European Social Survey (ESS) has been chosen as the winner of the Lijphart/Przeworski/Verba (LPV) Dataset Award 2020.**



*“When considering new policies, governments in the past were often ignorant of their citizens’ preferences and needs. Now European governments have a source for counteracting that ignorance.”*

**Professor Sir Roger Jowell CBE**  
Co-founder of the ESS

## ESS: Core Scientific Team (CST)

- HQ: City, University of London (UK)
- GESIS - Leibniz Institute for the Social Sciences (Germany)
- NSD - Norwegian Centre for Research Data (Norway)
- SCP - The Netherlands Institute for Social Research (Netherlands)
- Universitat Pompeu Fabra (Spain)
- University of Essex (UK)
- University of Ljubljana (Slovenia)



The Netherlands Institute  
for Social Research



University of Essex



## Participating countries

 <b>9 ROUNDS</b>	 <b>5 ROUNDS</b>
1. Belgium	23. Bulgaria
2. Finland	24. Cyprus
3. France	25. Italy
4. Germany	26. Russia
5. Hungary	27. Ukraine
6. Ireland	
7. The Netherlands	 <b>4 ROUNDS</b>
8. Norway	28. Greece
9. Poland	29. Iceland
10. Portugal	30. Latvia
11. Slovenia	
12. Spain	 <b>3 ROUNDS</b>
13. Sweden	31. Croatia
14. Switzerland	
15. United Kingdom	 <b>2 ROUNDS</b>
 <b>8 ROUNDS</b>	 <b>1 ROUND</b>
16. Austria	32. Albania
17. Czech Republic	33. Luxembourg
18. Denmark	34. Romania
19. Estonia	35. Turkey
 <b>6 ROUNDS</b>	
20. Israel	36. Kosovo
21. Lithuania	37. Montenegro
22. Slovakia	38. Serbia



# Questionnaire: Core and rotating modules



## CORE

- Media use; Internet use; social trust
- Political interest, trust in others / institutions, electoral and other forms of participation, party allegiance, socio-political orientations, immigration
- Subjective wellbeing, social exclusion, crime, religion, perceived discrimination, national and ethnic identity, vote intention in EU referendum
- Socio-demographic profile
- Human Values Scale
- Rotating modules  
*Two sections of approx. 30 questions on a single academic and/or policy concern within Europe*

## ROUND 10 2020-2021

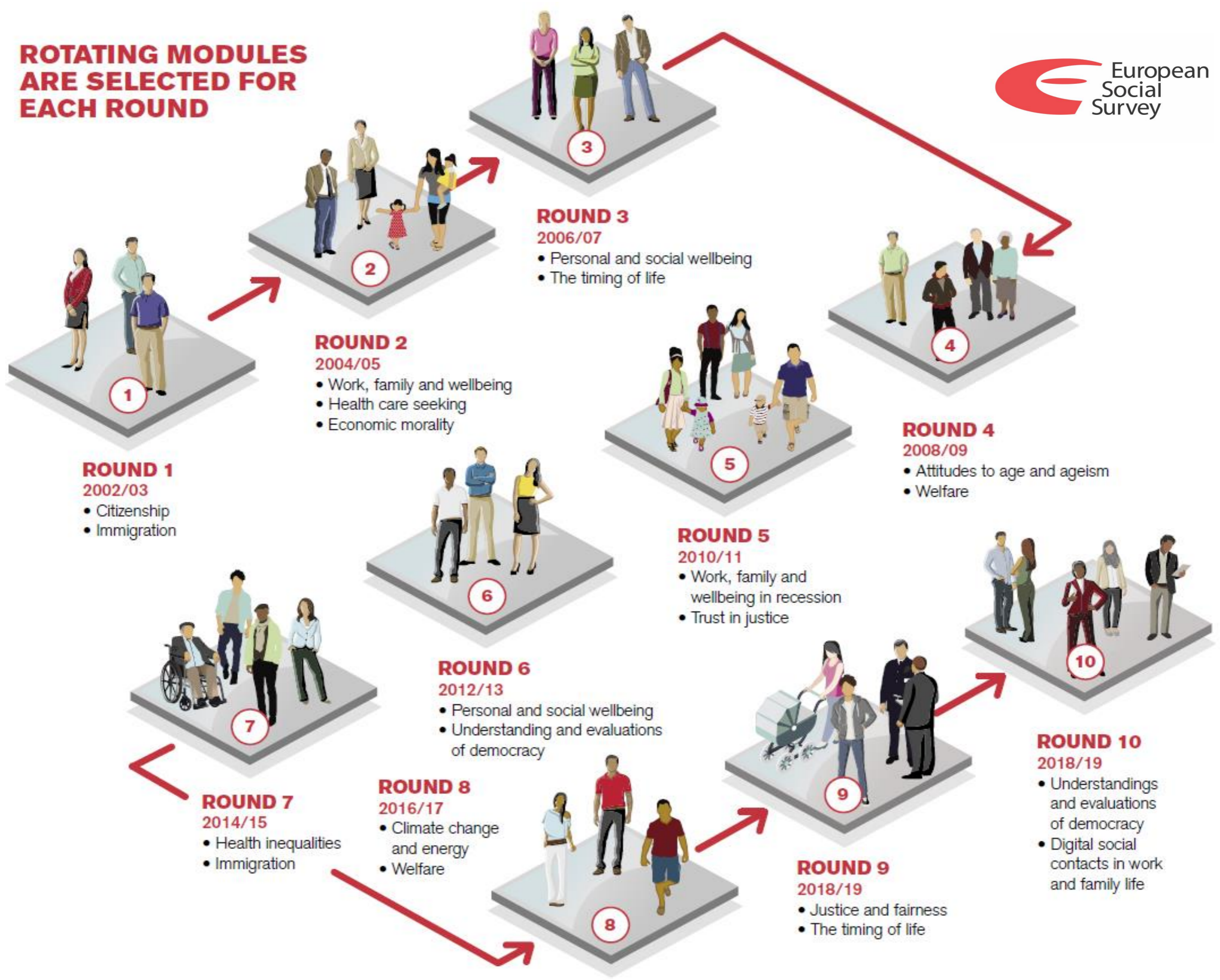
- Understandings and Evaluations of Democracy
- Digital Social Contacts in Work and Family Life

## COVID-19 Module

*Questions developed by National Coordinators, CST and international teams:*

- *Government authority and legitimacy in the age of a pandemic*
- *COVID-19 conspiracy beliefs and government rule compliance*

# ROTATING MODULES ARE SELECTED FOR EACH ROUND



# Expected results & Research Project Impact

## Impact

ESS is highly regarded amongst international values and attitudes surveys, offering extremely high-quality data that is a critical resource for:

### Academia

- researchers across the social sciences.

### Public Policy

- International organisations such as Eurofound, United Nations Economic Commission for Europe (UNECE), European Commission's DG EMPL (Employment, Social Affairs and Inclusion), OECD.
- Think tanks including the Centre for European Policy Studies and European Policy Centre.
- Governments and their agencies.

### Education

- Teaching courses, particularly within materials developed for use by students who are learning about survey methodology and quantitative data analysis.

### The wider public

The results are expected to:

- Document the changes in Greek society to the highest scientific standards. The benefits of documentation are manifold in terms of comparability with other countries before and during the crisis. The fact that Greece's participation stopped in 2011 created a knowledge gap especially with regard to the rotating modules which included key issues for the country such as migration and health inequalities .
- Contribute to the comparative pan-European documentation of changing attitudes and behaviours in Europe.
- Provide high quality evidence to researchers, academics, and policy makers in Greece addressing key social issues such as the economic crisis, migration, inequalities, trust in politics and political institutions, attitudes to climate change and the current COVID-19 pandemic.
- Promote student's analytical skills.

## The importance of this funding

This funding enables Greece to reconnect with the most prestigious research infrastructure in the field of social sciences today and the broader developments in the European Research Area and the European Strategic Forum for Research Infrastructures (ESFRI).

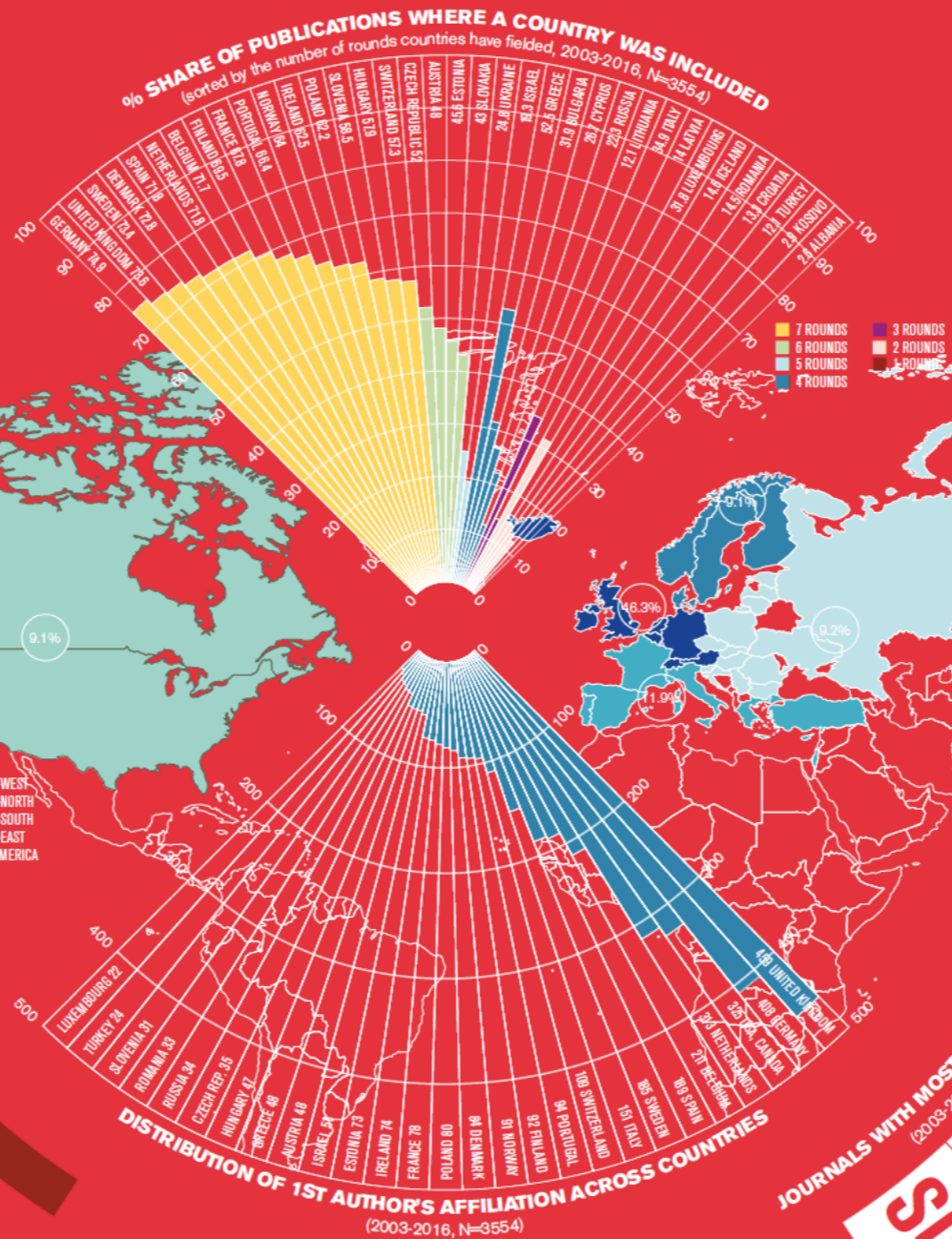
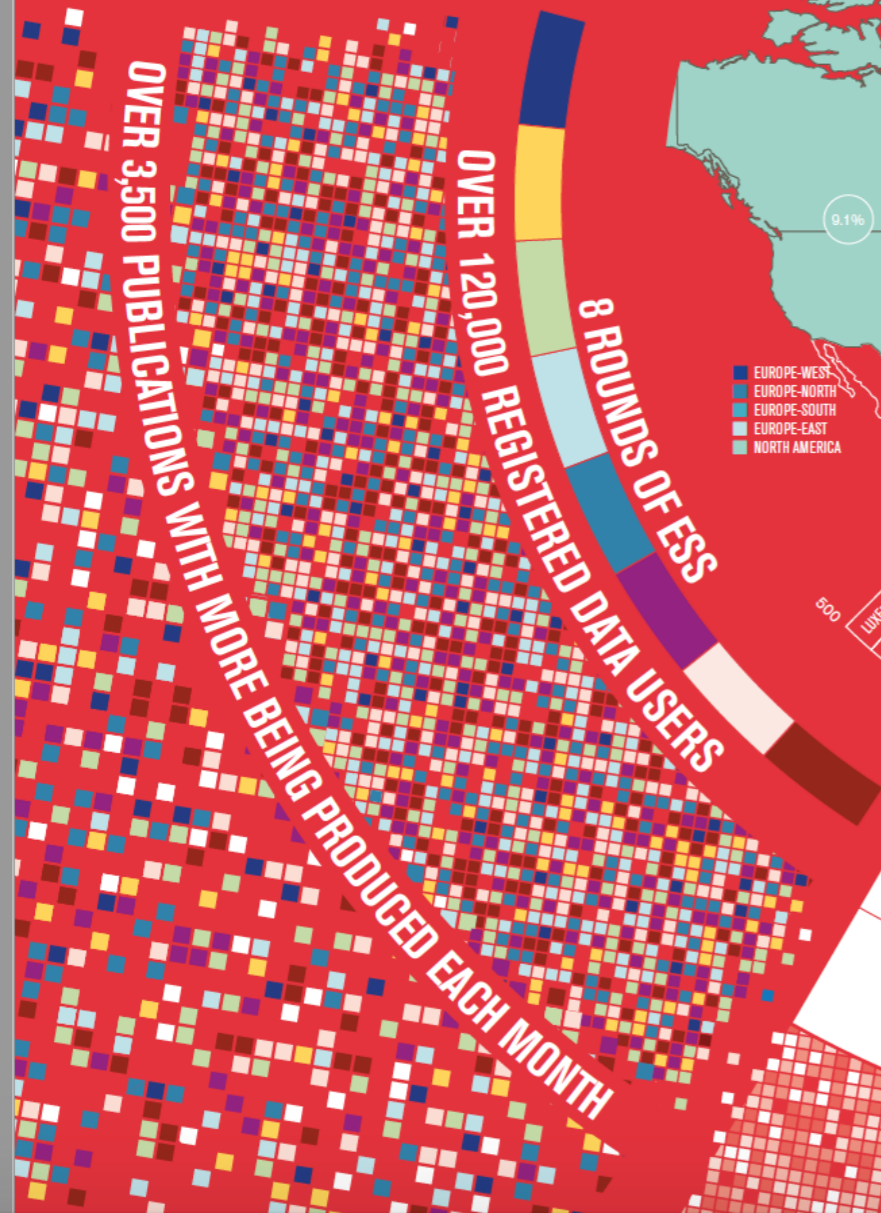
Strengthens the national research infrastructures in Greece indicating the ESS as an essential tool for the formulation of the national strategic roadmap for research, technology and innovation.

The project will advance the expertise and scientific excellence acquired by EKKE through its participation in previous rounds of the survey and in the refinement of rigorous methodological tools.

Greek data will chart stability and change in Greek society reaching out to a global audience of researchers, academics, policy-makers, journalists, students and the wider public.

# ESS publications: A global audience

The European Social Survey ERIC is a major European research infrastructure offering access to an ever increasing body of data on Europeans' social attitudes and behaviours.





**H.F.R.I.**  
Hellenic Foundation for  
Research & Innovation

## COMMUNICATION

185 Syggrou Ave. & 2 Sardeon St. 2  
171 21, N. Smyrni, Greece  
+30 210 64 12 410, 420  
info@elidek.gr  
[www.elidek.gr](http://www.elidek.gr)